

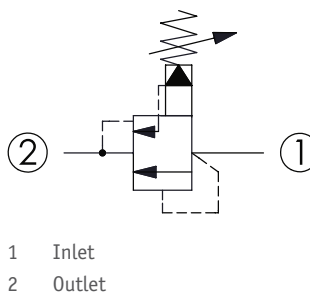
# CRQ-10A - Relief valve

Kick-down, pilot operated, balanced piston relief valve

## 1 Available versions

Ordering example:

CRQ-10A	-20	-A	-L
Type	Operation	Spring	Option




### Operation

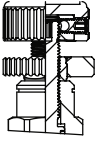
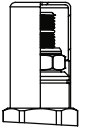
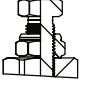
Coding	Description
20	Standard type

### Spring

Coding	Pressure (bar)	
	Adjustment range	Standard setting
A	7 - 210	70
B	3.5 - 105	70
C	10.5 - 420	70
D	1.7 - 55	28
E	1.7 - 28	14
N	4 - 55	28
Q	4 - 28	14
W	10.5 - 315	70

### Option

Coding	Option	Drawing
L	Leakproof hex. socket screw	

Coding	Option	Drawing
K	Handknob with lock knob	
C	Stainless steel tamper resistant cover	
G	Wrench adjustment	

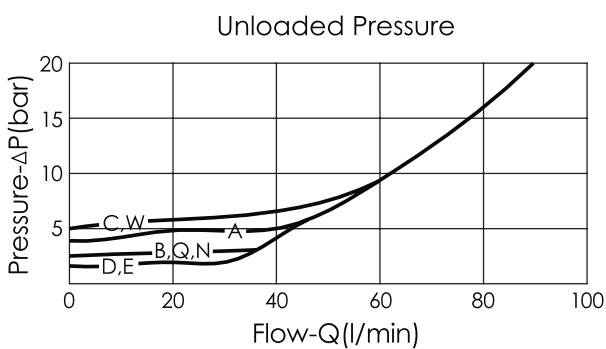
## 2 Technical data

Operating pressure $p_{max}$	350 bar
Flow rate $Q_{max}$	95 l/min
Installation torque	40 - 50 Nm
Cavity	T-10A
Weight	<ul style="list-style-type: none"> <li>▪ L: 0.14 kg</li> <li>▪ G: 0.12 kg</li> </ul>

### **i** INFORMATION

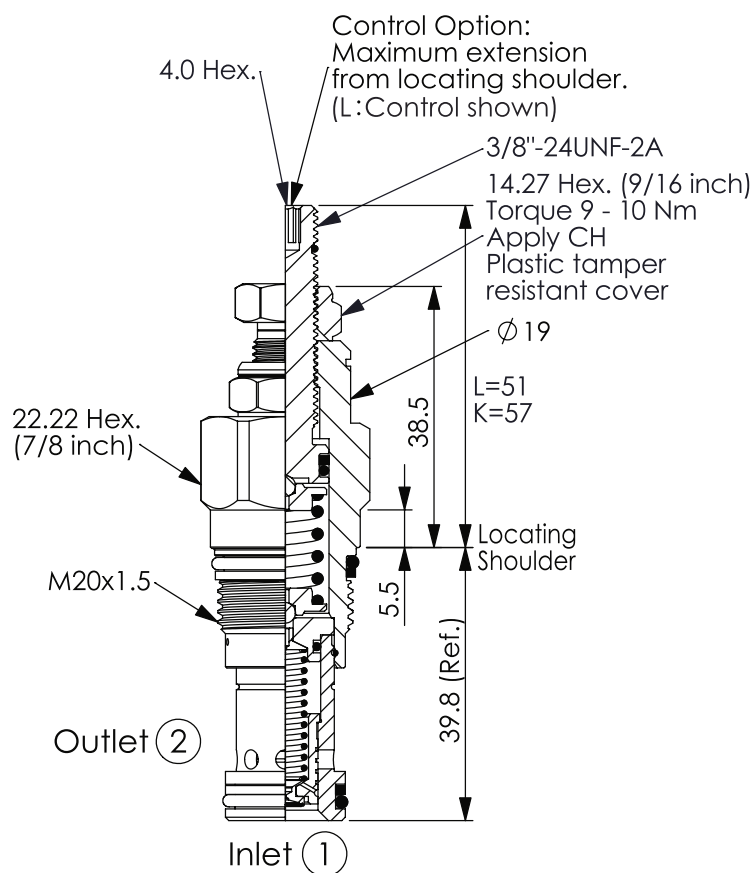
Maximum leakage approximately (30 cm<sup>3</sup>/min/70 bar)

### Characteristic lines



### 3 Dimensions

All dimensions in mm, subject to change.



### 4 Other information

see [Technical information HAWE cartridge valves: D 8219](#)

see [Recommendation for hydraulic fluid: D 5488/1](#)

